

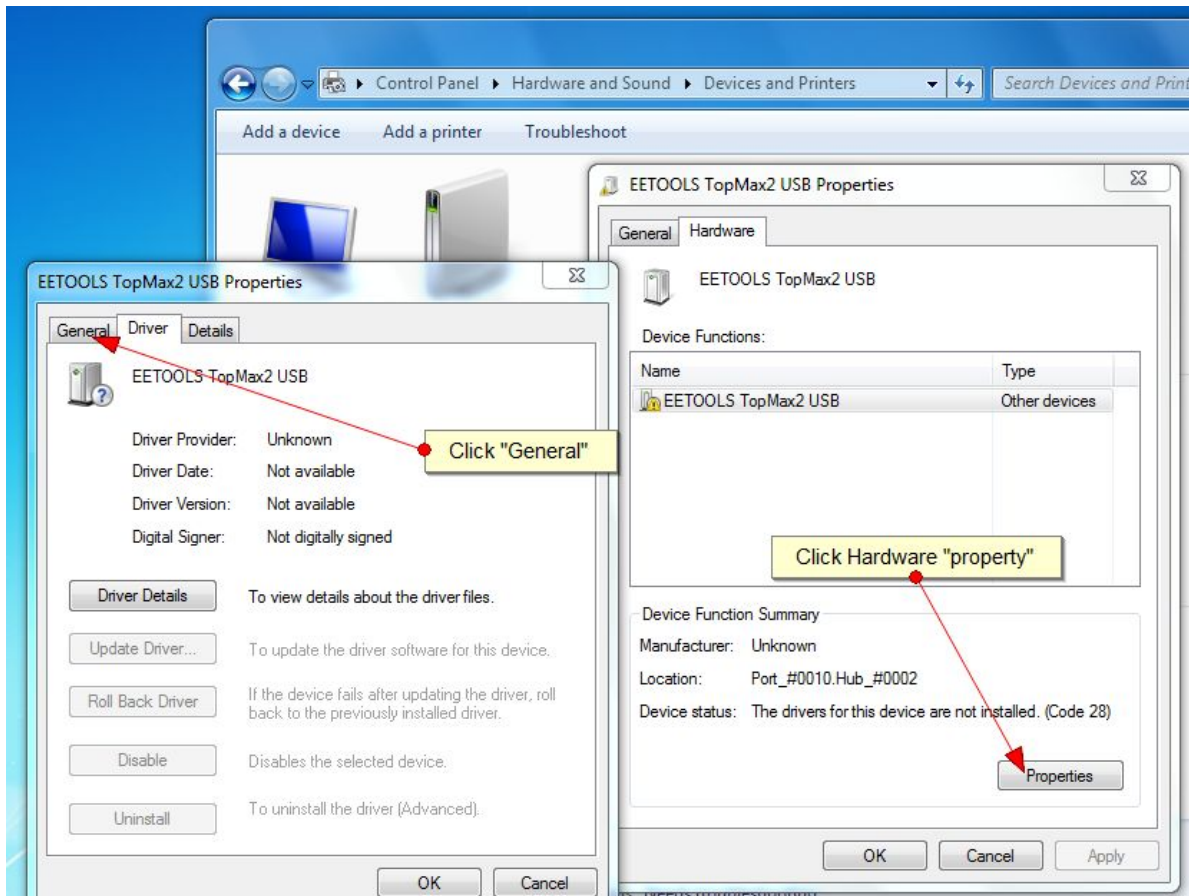
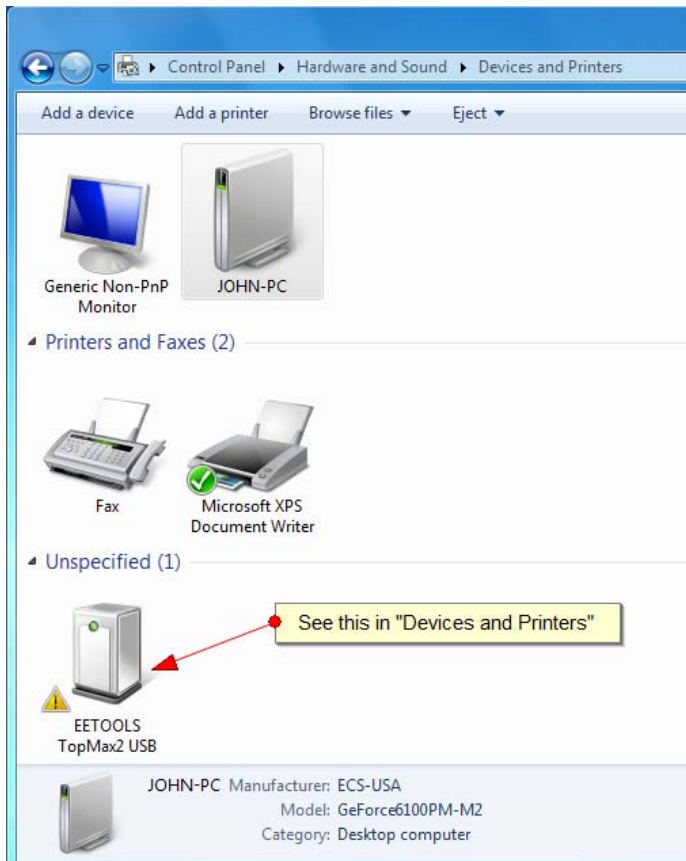
## How to install TopMaxII(ChipMax2) and ProMax in PC(Vista / Windows 7)

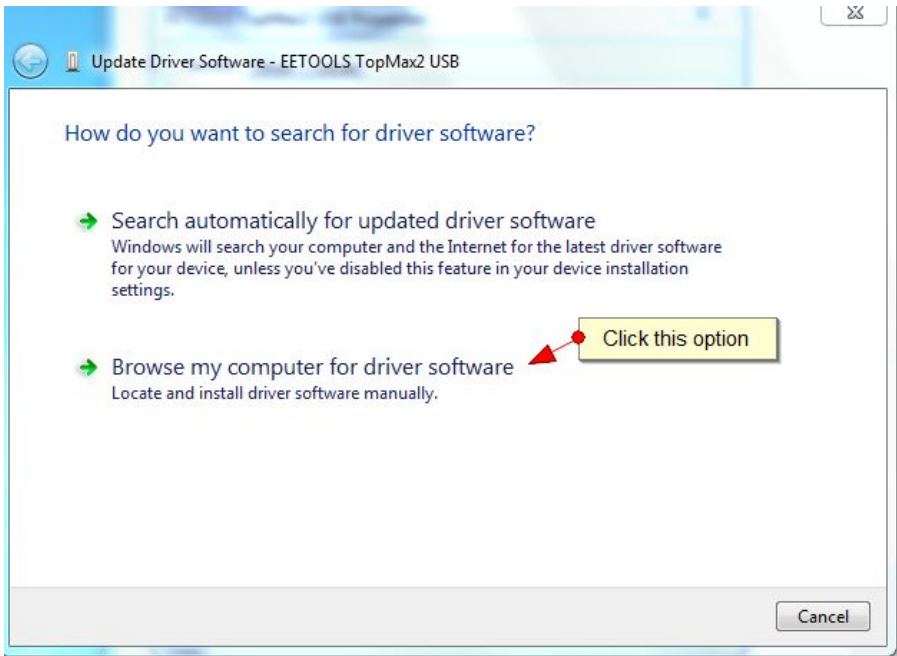
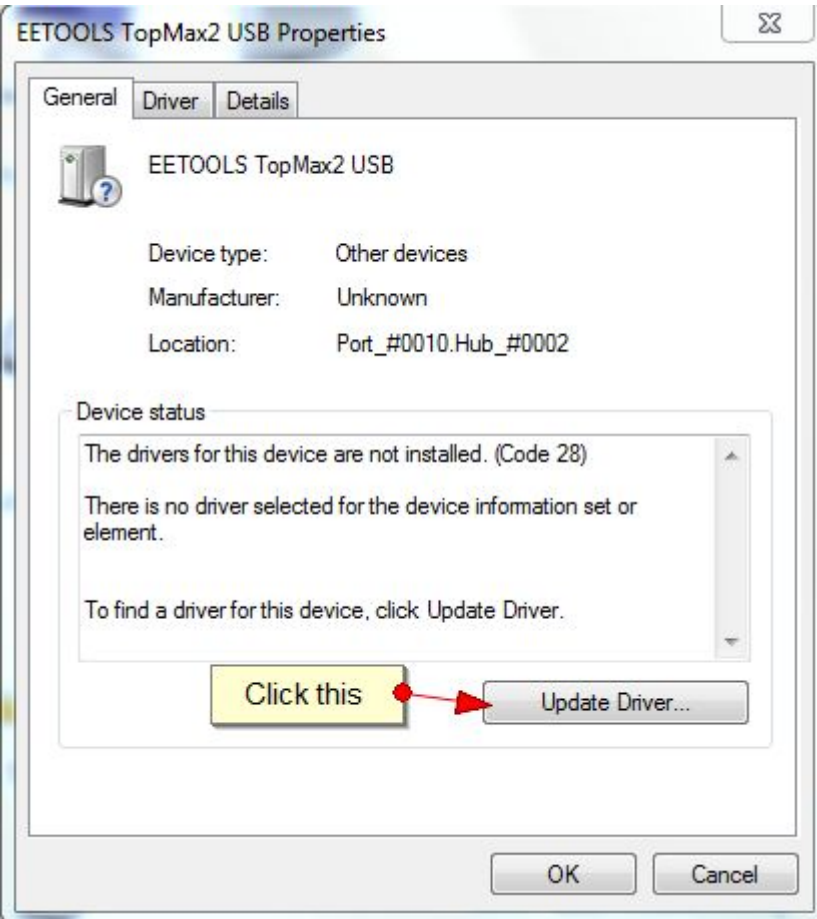
1. Install the **ml.exe** from CD or download from [www.eetools.com](http://www.eetools.com). (Do not plug-in your programmer in an USB port at this time).
2. Connect a USB cable between programmer and your computer and turn the power switch ON after connecting the power cord in the programmer.

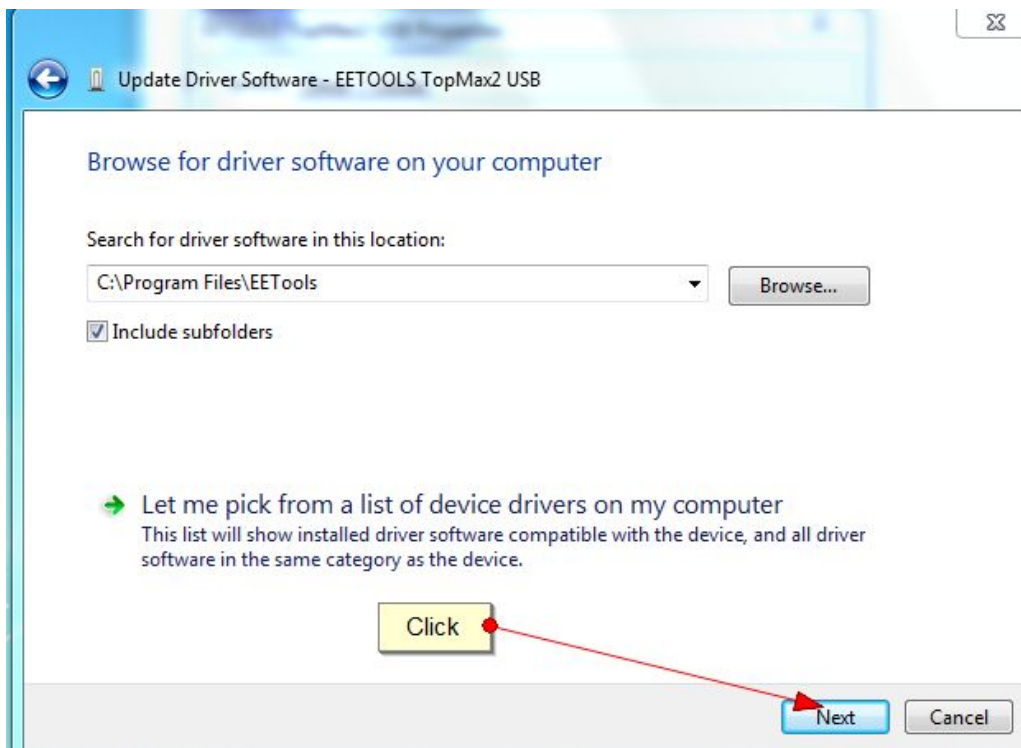
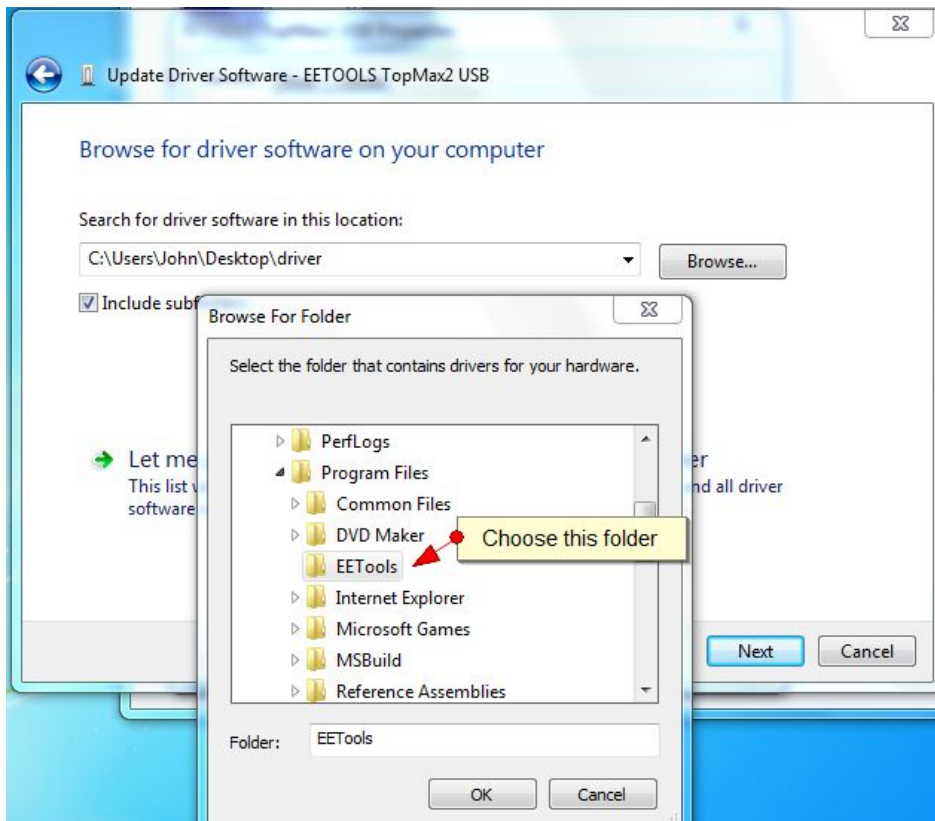
Note: If you see “New Hardware Found” wizard screen, don’t click the wizard screen. You are not able to install the programmer driver with this way.

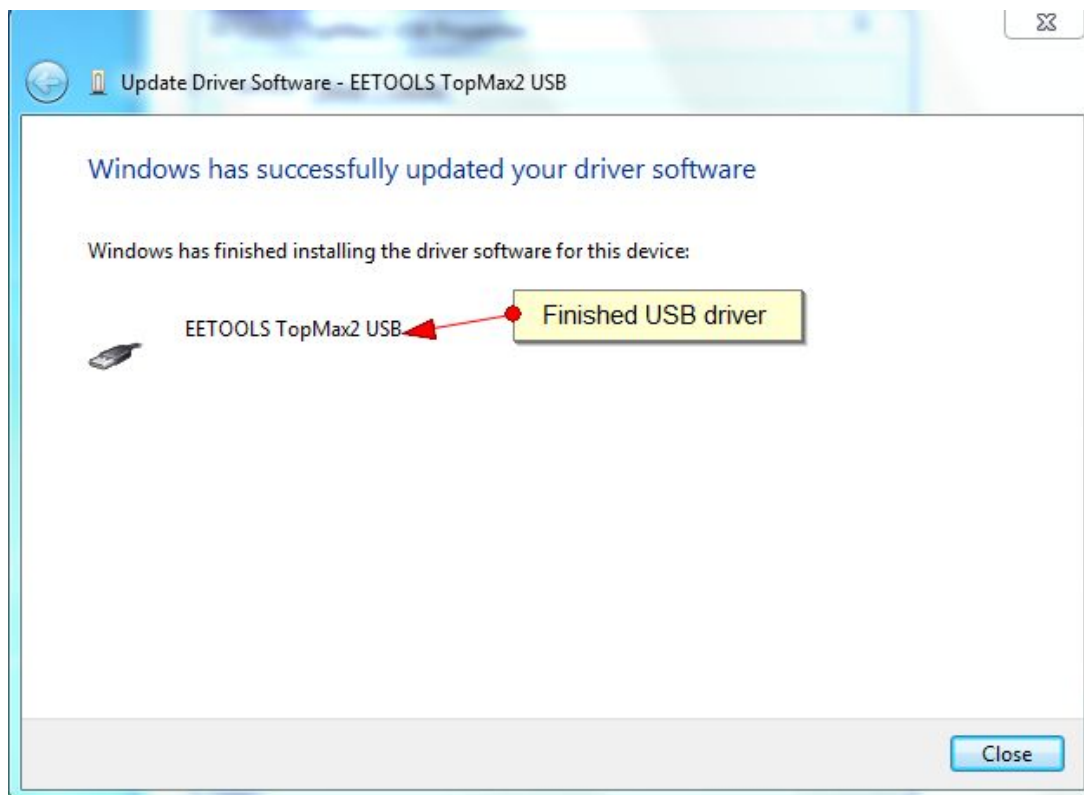
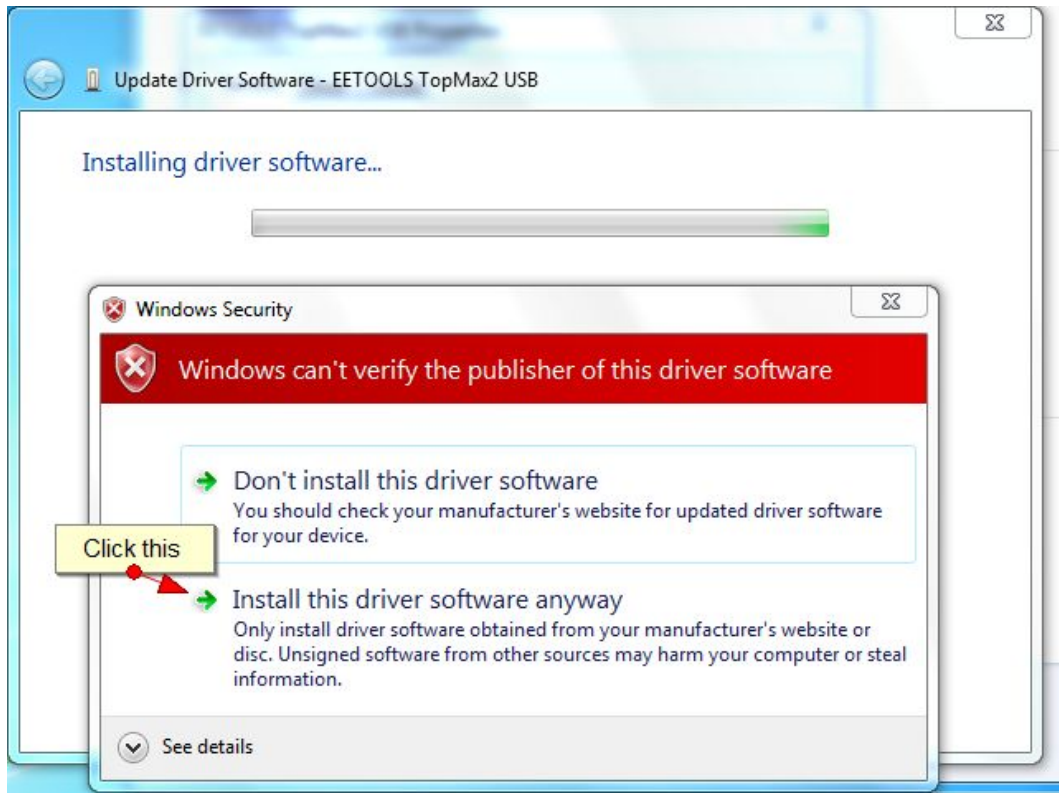
3. Follow the steps below for installation for USB 2.0 driver in Windows 7 or Vista OS.





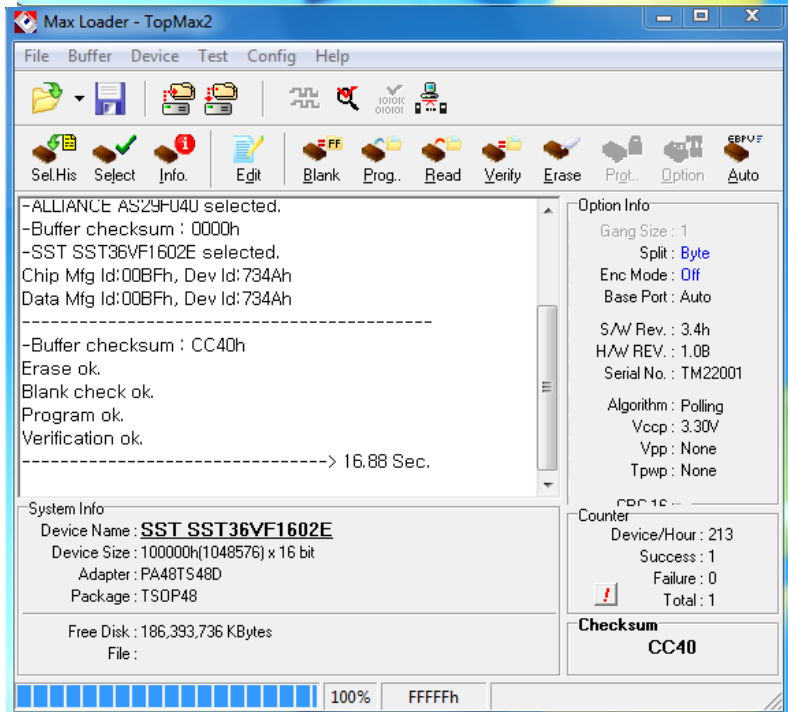
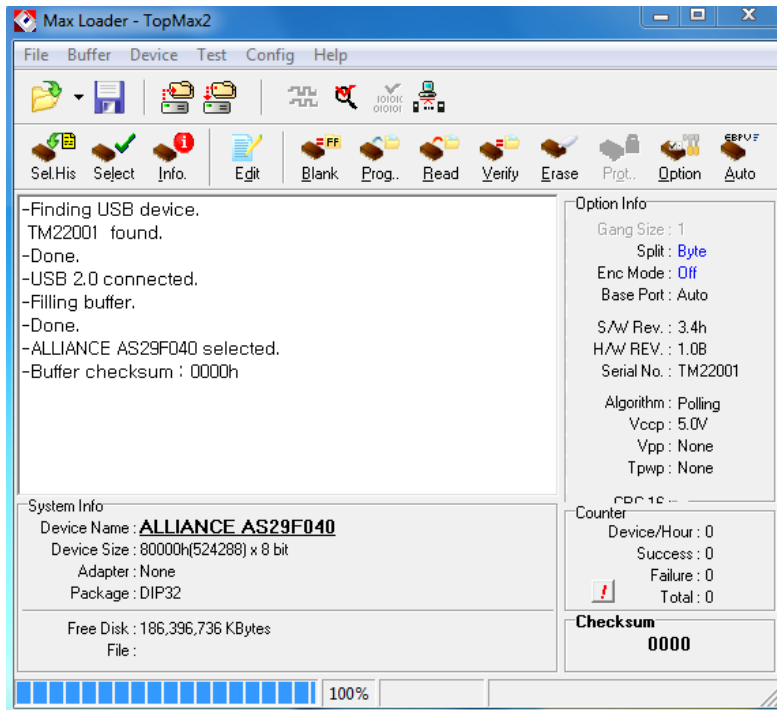






Note: For a computer that doesn't installed USB 2.0 controller, you need to install USB 2.0 driver for the particular product vendor.

4. Execute Maxloader and choose Programmer model
5. Choose your programmer (config/Select product) that is ready in your PC.



Note: Watch the model name in left-up corner screen and the TopMaxII won't be ready if "DEMO mode" appears in the screen. Check the USB cable and turn on the AC switch in the back side of unit.

Please contact [support@eetools.com](mailto:support@eetools.com) for your further question.