

32 PIN PLCC SOCKET ADAPTER

Model : PA32PL32D-YA

These adapters connect the pins of a 32 pin PLCC device to a 32 pin DIP equivalent.
They accept a PLCC device and plug into a DIP socket.



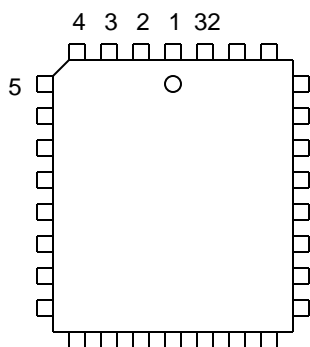
Order No.

► PA32PL32D-YA

Socket manufacture (Yamaichi), Socket type (Open)

The PA32PL32D-YA socket adapter accepts with the device family below :

Several 27x010, 27x020, 27x040, 27x080
Several 27x101, 27x201, 27x401, 29F100
Several 27C64, 27C128, 27C256, 27C512



The following chart shows the connections from the PLCC socket to the adapter's DIP plug.

PLCC32	DIP32	DIP32	PLCC32
1	1	32	32
2	2	31	31
3	3	30	30
4	4	29	29
5	5	28	28
6	6	27	27
7	7	26	26
8	8	25	25
9	9	24	24
10	10	23	23
11	11	22	22
12	12	21	21
13	13	20	20
14	14	19	19
15	15	18	18
16	16	17	17